

TECHNICAL DATA SHEET

HomeSure TileEx EX-22 Vitrified Expert (Grey) is a cementitious material in the powder form composed of cement, sand, polymer. On the site, add tile adhesive to water to make a mortar to fix tiles over any cementitious surface with <3% porosity.

SUBSTRATE

Interior walls & floors. Exterior floors.

APPLICATION AREA

Cementitious substrates like plasters and concrete.

PREFERRED TILES TYPE

Suitable for clay tiles, ceramic tiles and vitrified tiles.



FEATURES

- Easy mixing, smooth application & good workability
- Excellent tensile & shear adhesion strength
- Excellent bond to various building materials and substrates
- Low VOC - for healthy living



PHYSICAL PROPERTIES

| | |
|----------------------------|---|
| NATURE | Grey dry powder |
| COMPOSITION | Graded sand, cement, selected fillers, and polymers |
| WATER DEMAND | 25% ± 5% |
| POT LIFE | 150 ± 30 minutes @temp 27°C |
| OPEN TIME | ≥25 minutes @temp 27°C |
| ADJUSTMENT TIME | ≥25 minutes @temp 27°C |
| APPLICATION TEMPERATURE | 10°C to 40°C |
| GROUTING TIME | 24 hours |
| TIME TO HEAVY FOOT TRAFFIC | 24 hours |

APPLICATION AREAS

- Suitable for interior wall & floor and exterior floor applications
- Suitable for Clay tiles, Ceramic tiles & Vitrified tiles (as per IS 15622 recommendations of laying materials)
- Suitable for both new and old walls and tile on tile application
- Suitable for wet areas

APPLICATION PRECAUTIONS

- Do not add more water than recommended
- Optimum adhesive thickness 3 mm -12 mm
- Do not directly use on gypsum plaster surface, paint, wood, AAC blocks and metal
- Before tile-on-tile application, ensure that the original tiling surface has enough roughness to provide the required high strength bonding

PERFORMANCE AGAINST STANDARD

EN 12004:2017 Part 1/ ISO DATA

| Test Method | Requirement | Typical Values |
|--|-------------|----------------|
| Tensile strength extended open time, N/mm ² | ≥0.50 | 0.60 ± 0.05 |
| Slip resistance, mm | ≤0.50 | 0.35 ± 0.15 |

Tensile Adhesion Strength, N/mm²

| | | |
|-------------------------------|-------|-------------|
| Initial | ≥1.00 | 1.20 ± 0.20 |
| After water immersion | ≥1.00 | 1.20 ± 0.20 |
| After heat ageing | ≥1.00 | 1.20 ± 0.20 |
| After freeze -thaw conditions | ≥1.00 | 1.15 ± 0.20 |

The adhesive mortar conforms to EN 12004 / ISO 13007 as C2T

IS 15477 DATA

| Test Method | Requirement | Typical Values |
|--|-------------|----------------|
| Tensile Adhesion Strength, N/mm² | | |
| Dry condition | ≥1.00 | 1.20 ± 0.10 |
| Wet condition | ≥1.00 | 1.20 ± 0.10 |

Shear Adhesion Strength, N/mm²

| | | |
|-----------------------|-------|-------------|
| Dry condition | ≥1.25 | 1.30 ± 0.20 |
| Wet condition | ≥1.00 | 1.20 ± 0.10 |
| Heat ageing condition | ≥1.00 | 1.20 ± 0.10 |
| Slip resistance, mm | ≤0.50 | 0.35 ± 0.10 |

The Adhesive mortar conforms to IS 15477: 2019 - Type 2T Adhesive

COVERAGE



1.3 Kg-1.5 Kg /mm/ M².] 50 - 55 Sq. Ft./ Bag (20 Kg) at 3 mm thickness on a plain surface (depending on substrate conditions).

SURFACE PREPARATION

Ensure the substrate is dry, clean, and structurally sound.



Condition

Substrate must be stable, cured, compact. Free from dust, oil, grease and contaminants. There should be no rising damp, loose particles or flaky areas.

Surface Stability

The surface must be free of cracks and imperfections, with no hygrometric shrinkage present. Any uneven areas should be smoothed with suitable products.

Concrete

If applying on concrete, it should be cured for at least 28 days to prevent shrinkage after tile installation. For external applications or areas exposed to heavy foot traffic, ensure proper curing times.

MIXING



- Take 5 ± 1L of clean water for 20 Kg bag of HomeSure TileEx **EX - 22** in a clean bucket.

It is important to add material into water and not vice versa

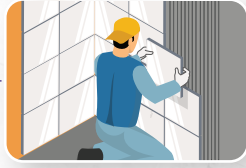
- Stir continuously for 3-5 minutes by using mechanical stirrer to obtain a homogeneous lump - free paste
- Allow the resultant paste to stand for about 5 minutes for the additives to dissolve
- Re-mix again for about 2 minutes. The mixture is now ready to apply

GUIDANCE FOR APPLICATION

APPLICABLE SUBSTRATES

- Cementitious substrates like plasters and concrete
- Cementitious dry screeds

APPLICATION



- Dampen the surface to be plastered with clean water. Allow excess water to drain off
- The tiles should be immersed in water for about two hours before fixing
- Apply material with notched trowel, use 6 mm - 10 mm notch trowel for application as per the size of tile
- Application should be angled between 45 to 60 degrees, using the right amount of pressure. Check for holes and gaps in the adhesive, spread it evenly
- Fix the tile in the place, press it sideways or tap gently with mallet from the center towards the outside. (for 600 x 600 mm and for larger tiles, use tile vibrator for better dispersion)
- Use a notched trowel to remove excess mixture from the tile and clean it by using a damp cloth or sponge

SHELF-LIFE & STORAGE INSTRUCTIONS



- 12 months from the date of manufacturing when stored in unopened, original sealed and dry condition at a temperature range from +5°C to 40°C
- Store in dry and well-ventilated place away from heat source, direct sunlight, humidity, water source
- Avoid using partially used material; open bags with partially used material should be kept in a bag with its mouth tied tightly with string to prevent lump formation

HEALTH AND SAFETY INFORMATION



- Refer MSDS for information and advice on the safe handling, storage and disposal of chemical products
- Use rubber hand gloves and safety goggles, while using product
- Avoid contact with skin/eyes and avoid swallowing. In case of contact with skin, wash with plenty of water
- Keep out of children's reach

PACKING

Available in 20 Kg bag



HOMESURE TILE EX RANGE OF PRODUCTS

Tile Expert



TA EX Version 1 - 26 Mar 2026

