

**HOMESURE**  
**TILE EX**

Tile Expert

**EX - 55**

**ALL TILE EXPERT**

## TECHNICAL DATA SHEET

### TileEX EX - 55

HomeSure TileEx EX - 55 (White) is highly polymerised, cement-based adhesive formulated with special properties like water resistant, slip resistance, flexibility and extended open time.

### SUBSTRATE

Suitable for Type 1 to 3 compatible substrates and specially designed for dry wall substrates.

### APPLICATION AREA

Interior & Exterior floor & wall applications.

### PREFERRED TILES TYPE

It is suitable for tiles like ceramic, clay tiles, basalt tiles, vitrified, glass mosaic tiles and all natural stone tiles.



## FEATURES



Easy mixing, smooth application & good workability



Excellent bond to various building materials and substrates



Highly water resistant



Extended open time- suitable for large format & external condition



Excellent tensile & shear adhesion strength



Low VOC - for healthy living



## PHYSICAL PROPERTIES

NATURE	White dry powder
COMPOSITION	Graded sand, cement, selected fillers and polymers
WATER DEMAND	25% ± 5%
POT LIFE	150 ± 30 minutes @temp 27°C
OPEN TIME	≥35 minutes @temp 27°C
ADJUSTMENT TIME	≥35 minutes @temp 27°C
APPLICATION TEMPERATURE	10°C to 40°C
GROUTING TIME	24 hours
TIME TO HEAVY FOOT TRAFFIC	24 hours

## APPLICATIONS

- Suitable for interior and exterior wall & floor applications
- It can be used for both new and old walls and tile on tile application

## APPLICATION PRECAUTIONS

- Do not add more water than recommended
- Maximum adhesive thickness 3 mm -15 mm
- Do not directly use on gypsum plaster surface, paint, wood and metal
- Before tile-on-tile application, ensure that the original tiling surface has enough roughness to provide the required high strength bonding

## PERFORMANCE AGAINST STANDARD

### EN 12004 / ISO 13007 DATA

Test Method	Requirement	Typical Values
Tensile strength extended open time, N/mm <sup>2</sup>	≥0.50	1.00 ± 0.10
Slip resistance, mm	≤0.50	0.35 ± 0.10

#### Tensile Adhesion Strength, N/mm<sup>2</sup>

Test Method	Requirement	Typical Values
Initial	≥1.00	1.70 ± 0.20
After water immersion	≥1.00	1.60 ± 0.20
After heat ageing	≥1.00	1.20 ± 0.10
After freeze - thaw	≥1.00	1.60 ± 0.20
Transverse deformation, mm	≥2.50 <5.00	2.60 ± 0.10

The adhesive mortar conforms to EN 12004 / ISO 13007 as C2TES1

### IS 15477 DATA

Test Method	Requirement	Typical Values
<b>Tensile Adhesion Strength, N/mm<sup>2</sup></b>		
Dry condition	≥1.50	1.60 ± 0.10
After water immersion	≥1.00	1.30 ± 0.10

#### Shear Adhesion Strength, N/mm<sup>2</sup>

Test Method	Requirement	Typical Values
Dry condition	≥1.50	1.60 ± 0.10
After water immersion	≥1.00	1.20 ± 0.10
Ageing heat ageing	≥1.00	1.20 ± 0.10
Slip resistance, mm	≤0.50	0.35 ± 0.15
Transverse deformation, mm	≥2.50 <5.00	2.60 ± 0.10

The adhesive mortar conforms to IS 15477:2019 as Type 4TS1

## COVERAGE



(1.3 Kg - 1.5 Kg /mm/ M<sup>2</sup>.] 50 - 55 Sq. Ft./ Bag (20 Kg) at 3 mm thickness on a plain surface (depending on substrate conditions).

## SURFACE PREPARATION

Ensure the substrate is dry, clean, and structurally sound.



### Condition

Substrate must be stable, cured, compact and free from dust, oil, grease and contaminants. There should be no rising damp, loose particles or flaky areas.

### Surface Stability

The surface must be free of cracks and imperfections, with no hygrometric shrinkage present. Any uneven areas should be smoothed with suitable products.

### Concrete

If applying on concrete, it should be cured for at least 28 days to prevent shrinkage after tile installation. For external applications or areas exposed to heavy foot traffic, ensure proper curing times.

## MIXING



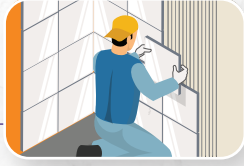
- Take 5 ± 1L of clean water for 20 Kg bag of HomeSure TileEx **EX-55** (White) in a clean bucket. It is important to add material into water and not vice versa
- Stir continuously for 3-5 minutes by using mechanical stirrer to obtain a homogeneous lump - free paste
- Allow the resultant paste to stand for about 5 minutes for the additives to dissolve
- Re-mix again for about 2 Minutes. The mixture is now ready to apply

## GUIDANCE FOR APPLICATION

### APPLICABLE SUBSTRATES

- Cementitious substrates like plasters & concrete
- Cementitious dry screeds
- Tiles and stone tiles on exterior substrate

## APPLICATION



- Dampen the surface to be plastered with clean water. Allow excess water to drain off
- Apply the material with the help of notch trowel and use 6 mm - 12 mm notched trowel for application as per size of tile
- Application should be angled between 45 to 60 degrees, using the right amount of pressure. Check for holes and gaps in the adhesive, spread it evenly
- Fix the tile in the place and press it sideways or tap gently with mallet from the center towards the outside. (For 600 x600 mm and larger tiles, use of tile vibrator for better dispersion)
- Use a notched trowel to remove excess mixture from the tile and clean it by using a damp cloth or sponge

## SHELF LIFE & STORAGE INSTRUCTIONS



- 12 months from the date of manufacturing when stored in unopened, original sealed and dry condition at a temperature range from +5°C to 40°C
- Store in dry and well-ventilated place away from heat source, direct sunlight, humidity, water source
- Avoid using partially used material; open bags with partially used material should be kept in a bag with its mouth tied tightly with string to prevent lump formation

## HEALTH & SAFETY INFORMATION



- Refer MSDS for information and advice on the safe handling, storage, and disposal of chemical products
- Use rubber hand gloves and safety goggles, while using product
- Avoid contact with skin/eyes and avoid swallowing. In case of contact with skin, wash with plenty of water
- Keep out of children's reach

## PACKING

Available in 20 Kg bag



## RANGE OF PRODUCTS



TA EX Version 1 - 26 Mar 2026

