

HOMESURE

# SCRATCHEX

Texture Expert





## ACRYLIC TEXTURE



### SUBSTRATE

- Old / New Concrete surfaces
- Interior and Exterior Wall
- Asbestos cement sheets.
- Cement /Lime/Sand renderings



HomeSure ScratchEX **Acrylic Texture** is trowel applied synthetic grooved finish Texture. The product is formulated with modified acrylic emulsion and marble texturizing sand. Used for decoration and long-term protection. It has unique textured pattern which can be used for interior and exterior surface.

#### COVERAGE

Regular: 2.0-3.0 sq. ft./Kg/coat

Dholpur: 2.0 – 2.5 sq. ft./Kg for a two-coat,  
@ a thickness of ~2.0 – 2.5 mm

Superfine: 6.0 – 8.0 sq. ft./Kg/ coat (Texture coverage depends on substrate conditions)

### FEATURES



**PLASTER PROTECTION**



**WEATHER PROTECTION**



**TOUGH TEXTURE**



**EXCELLENT COVERAGE**

### COMPOSITION

Acrylic emulsion, marble sand, Additives

### TECHNICAL DATA

Texture	Regular	Dholpur	Superfine
Dry to Recoat	12-16 hrs	16-18 hrs	12-16 hrs
Colour	Off white	Off white	Off white

PARAMETERS	SPECIFICATIONS
Appearance	White Viscous Form
pH	8 - 10
Surface Drying Time	30 to 60 min
Gloss level	Matt when dry
Solid Content	Min. 80%
Wet Density	2.00 -2.2g/ml
Adhesion Strength	>1 MPa



## CEMENT BASE TEXTURE



### SUBSTRATE

- Hide imperfections in a room.
- Good coverage against tricky cracks or dents



HomeSure ScratchEX **Cement Base Texture** is a polymeric wall finish product. It decorates the wall with various type of patterns as well as protect both interior and exterior wall. It is more economical than other acrylic based products. It contains finest quality minerals, white cement, and polymers.

#### COVERAGE

100 to 120 sq.ft./ 30 bag (Depending on substrate conditions)

#### COMPOSITION

White cement, selected fillers, marble sand, polymers

### FEATURES



**FUNGAL RESISTANT**



**GOOD COVERAGE**



**DAMPNESS RESISTANT**



**TOUGH TEXTURED**

PARAMETERS	SPECIFICATIONS
Workability	Good
Consistency	20 – 25 %
Pot Life	> 30 minutes
Drying Time (Dry To Touch)	0-1 Hour
Drying Time (Hard To Press)	Max. 8 Hours
Density	1.80-2.00 gm/ml



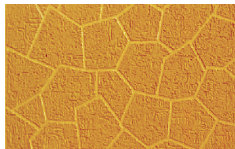
### SUITABLE ON

- ✓ Cement Plaster
- ✓ Concrete
- ✓ Gypsum Board
- ✓ Masonry

### SUGGESTED FINISHES



BRICKS



STONE



CUBE



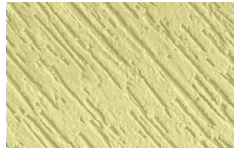
DHOLPUR



HORIZONTAL



VERTICAL



RAINFALL



SUPERFINE



**Walplast Products Pvt. Ltd.** ISO 9001: 2015 Certified Company  
Plot No A, 246, Cross Road Number 18, T.T.C. Industrial Area, MIDC  
Industrial Area, Mahape, Navi Mumbai, Maharashtra-400 710.

🌐 [www.walplast.com](http://www.walplast.com) ✉ [sales@walplast.com](mailto:sales@walplast.com) ☎ 1800 3000 6650.

FOLLOW  
US ON



SCAN FOR  
MORE DETAILS

